

Real Cable/PRO[®]



CATALOG 2024



Designed and developed in France



Catherine Torchin
Co-fondatrice

Dear Partners,

Reliable to our philosophy, we keep promoting the innovation without resting on our past achievements. We are collaborating with the best partners in order to develop the strongest Real Cable® team spirit and enable us to find the best solutions ever known.

The main target of Real Cable® brand still remains the entire satisfaction of the customers. That's why, we place ourselves at the end users' point of view.

Today Real Cable® brand is well known in more than 25 countries all around the world with an "Excellence Reputation" of which we are proud of.

We owe this very good reputation to our customers. They respect deeply our quality and our design. The Real Cable® brand speaks for itself.

We thank all our partners and friends in France and all around the world, who constantly help us to improve Real Cable® brand.

Catherine & Marcel Torchin
Real Cable's Co-founders

«Excellence Reputation» : Patrick Vercher – Stéréo & Image.

3

HDMI

9

SPEAKER

13

ETHERNET

17

AUDIO

23

NOMAD

29

ACCESSORIES

33

MONITEUR RANGE

Real Cable PRO

ITEM HDMI

RealCable/PRO

HD E 2

Easy installation HDMI Cable



Tin-plated and 99.99% oxygen free copper (OFC) conductors, strong section cable, double shielding, removable metallic plugs, gold contacts, plenty of available lengths.

1 male HDMI plug / 1 male HDMI plug.

Very High Speed with 18 G/bits. eARC

Excellent performance in Ultra HD, Full HD and in 3D even on large lengths, 4K (4096 x 2160 p 60) Removable plug covers to facilitate the route of the cable in an integrated duct (Ø 25 mm minimum recommended).

From 7.50 m to 20 m : Active HDMI (4K@60Hz with active Filter technology). A dedicated integrated circuit is used that has been developed to provide uncompressed Ultra HD 4K@60Hz and HDR. There is no need for an external power supply.



Pictures may differ from actual products

- Ref. HD-E-2 | 0.75 m | 1.50 m | 3.00 m | 5.00 m
- Ref. HD-E-2 | 7.50 m
- Ref. HD-E-2 | 10.00 m | 12.00 m | 15.00 m



HD OPTIC

HDMI optical cable

NEW



Compliant with HDMI 2.1 AOC Cable with metal plug. Gold support 48 Gbps. 4K @120Hz 8K @60 Hz RGB/ 4 : 4 : 4. eARC

The optical transmission of high frequency signal, no electromagnetic interference.

HDMI cable with professional optical fiber technology. This technology facilitates data rates of up to 18 Gbps on a transmission path of up to 150 m. It therefore supports high-resolution 4K formats with 50 or 60 Hz and is the solution for connecting devices with an HDMI 2.0 interface over great distances.



- Ref. HD-OPTIC 4K | 10.00 m | 15.00 m | 20.00 m | 25.00 m | 30.00 m
- Ref. HD-OPTIC 4K | 40.00 m | 50.00 m | 75.00 m | 100 m | 150 m

NEW

- Ref. HD-OPTIC 8K | 5.00 m | 7.50 m | 10.00 m | 15.00 m | 20.00 m



HD E C

C type HDMI cable



Tin-plated and 99.99% oxygen free copper (OFC) conductors, double shielding, molded plugs, gold contacts, 1 male HDMI plug / 1 mini male HDMI plug.

Excellent performance in Full HD and in 3D. Ideal cable to meet the needs of portable HD devices (camcorders, cameras, tablets, etc.).

Ref. HD-E-C | 2.00 m



HD-ULTRA 2

Ultra flat HDMI cable



Tin-plated Nanotech® conductors, ultra-flat cable, double shielding, metal plugs, gold contacts, many available lengths, 1 male HDMI plug / 1 male HDMI plug.

Excellent performance in Full HD, Ultra HD in 3D and 4K. Connection Very High Speed optimized by the spacing of data channels, which are no longer concentric, but side by side. Very flexible flat cable and very compact plugs facilitate connections to flat screens, without any compromise on quality.

From 3.00 m : Active HDMI (4K@60Hz with active Filter technology). A dedicated integrated circuit is used that has been developed to provide uncompressed Ultra HD 4K@60Hz and HDR. There is no need for an external power supply.



Ref. HD-ULTRA 2 | 0.75 m | 1.00 m | 1.50 m | 2.00 m | 3.00 m



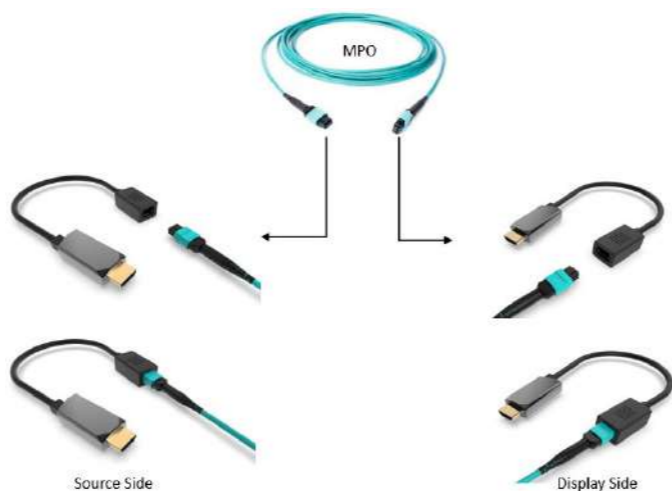
HDMI MPO

HDMI CABLE with removable plugs / available April

The removable connectors of our HDMI cable allows for greater flexibility and convenience during installation.

You can easily adjust the length of the cable according to your specific needs

- > HDMI A/P both ends
- > 48Gbps, 8K/60
- > Max Length: 300m
- > Support eARC up to 300m
- > Fiber Connector Type: MPO
- > Enhanced mechanical strength to withstand 20kg pull force
- > High ESD protection at TMDS input: 8KV (HBM)



Ref. HDMI MPO | 10 m | 15 m | 20 m | 25 m | 30 m

Ref. HDMI MPO | 40 m | 50 m



HD-21SM

2 inputs to 1 output HDMI switch

Technical specifications

- > Inputs : 2 x female HDMI plug (A type)
- > Output : 1 x female HDMI plug (A type)
- > High efficiency electromechanical switch
- > Selected input indicated by a LED
- > Self powered (no power supply needed & no power consumption)
- > Gold contacts
- > HDCP, Deep Color, x.v.Color™, auto Lipsync, CEC and ARC (Audio Return Channel)
- > Video : up to 1 080p (24, 50 and 60 Hz)
- > 3D video : 1 080p sequential, 1 080p Top-Bottom and 1 080p Side-by-Side
- > Audio : LPCM 7.1, Dolby® TrueHD and DTS™HD
- > Maximum HDMI interconnection : 5 m between input & output
- > Weight : 170 g
- > Dimensions (L x D x H) : 127 x 130 x 32 mm



HD-31SM

3 inputs to 1 output HDMI switch

Technical specifications

- > Inputs : 3 x female HDMI plug (A type)
- > Output : 1 x female HDMI plug (A type)
- > High efficiency electromechanical switch
- > Selected input indicated by a LED
- > Self powered (no power supply needed & no power consumption)
- > Gold contacts
- > HDCP, Deep Color, x.v.Color™, auto Lipsync, CEC and ARC (Audio Return Channel)
- > Video : up to 1 080p (24, 50 and 60 Hz)
- > 3D video : 1 080p sequential, 1 080p Top-Bottom and 1 080p Side-by-Side
- > Audio : LPCM 7.1, Dolby® TrueHD and DTS™HD
- > Maximum HDMI interconnection : 5 m between input & output
- > Weight : 200 g

> Dimensions (L x D x H) : 127 x 130 x 32 mm



HD-USB-C

USB-C / HDMI CABLE / available April

With HDMI cable of the USB-C type, you will experience exceptional image and sound quality. Enjoy 4K resolution for clear visuals and surround sound for a fully immersive experience in your movies, games and other content.

High quality and performance.

Ref. HD USB C | 1.50 m



HDS 61

3 inputs to 1 output HDMI switch

Technical specifications

- > Inputs : 6 x female HDMI plug (A type) with SafeLock® system
- > Output : 1 x female HDMI plug (A type) with SafeLock® system
- > Professional metal case (better EMI/RFI protection)
- > High efficiency electronic switch
- > Selected input indicated by a LED
- > External 5 V DC power supply (no electric interference)
- > Remote control
- > Gold contacts
- > CEC functions supported : routing change, one touch play, stand by, pass through CEC commands
- > Video : up to 1 080p (24, 50 and 60 Hz), 12- Bit Deep Color HD TV
- > 3D video : 1 080p sequential, 1 080p Top-Bottom and 1 080p Side-by-Side
- > Audio : Dolby® TrueHD lossless compressed digital audio compliant and DTS™HD



Front



Back



> Dimensions (L x D x H) : 200 x 104 x 26 mm

HDS 51

NEW

Switcher 8K - 5X1 HDMI and USB C - available March

HDS 12 4K

HDMI dispatcher 1 input to 2 outputs (simultaneous)

Technical specifications

- > Input : 1 x female HDMI plug (A type)
- > Outputs : 2 x female HDMI plug (A type)
- > Professional metal case (better EMI/RFI protection)
- > High efficiency electronic switch
- > Output indicated by a LED
- > External 5 V DC power supply (no electric interference)
- > Gold contacts
- > HDCP 2.2 and HDCP 1.4, HDR, Deep Color, x.v.Color™, auto Lipsync and CEC
- > Video : ultra HD (4K) and 1 080p (24, 50 and 60 Hz)
- > 3D video : 1 080p sequential, 1 080p Top-Bottom and 1 080p Side-by-Side
- > Audio : PCM, LPCM 7.1, Dolby Digital, Dolby Digital Plus, Dolby® TrueHD, DTS 96/24 and DTS™HD
- > Maximum HDMI interconnection : 30 m between input & output (integrated booster)
- > Weight : 160 g
- > Dimensions (L x D x H) : 115 x 55 x 20 mm



NEW

Splitter 8K

2x1 Bidirectionnal - Available April



NEW

Switcher 4K

4X2 Matrix - coming news



NEW

HDMI Extender

HDBase T - Coming news
70M with Bi-direction
IR Support 4K @30Hz



HDMI.M/DVI.F

Adapteur HDMI male/DVI female

Technical specifications

- Recommended to transform HDMI plug from devices to DVI. Digital video interconnection.
- Gold contacts.
- > 1 male HDMI plug (A type)
 - > 1 female DVI plug



CONTACT
24K
GOLD

HDMI.F/DVI.M

Adapter female HDMI /Male DVI

Recommended to transform DVI plug from devices to HDMI.

- Gold contacts.
- > 1 female HDMI
 - > 1 male DVI plug



CONTACT
24K
GOLD

HDMI.F/USB-C.M

NEW

Adapter female HDMI / USB-C / available march

Recommended to transform USB-C to HDMI and HDMI to USB-C

- Gold contacts.



CONTACT
24K
GOLD

ITEM

SPEAKER

Real Cable PRO

SPVIM

SPEAKER CABLE COPPER CA

This speaker cable is very flexible and is recommended for custom installations.

SPVIM cable is made of CCA copper-plated strands and is protected by a low-density PVC sheath in white, transparent or black color.

It's available in a 200 meter spool (1.50 mm² cross-sectional cable) or a 100 meter spool (2.00 mm² and 2.50 mm² cross-sectional cable).



TRANSPARENT

Ref. SPVIM 150 | 1.50 mm² | 200 m

Ref. SPVIM 200 | 2.00 mm² | 100 m

Ref. SPVIM 250 | 2.50 mm² | 100 m



WHITE

Ref. SPVIM 150 B | 1.50 mm² | 200 m

Ref. SPVIM 200 B | 2.00 mm² | 100 m

Ref. SPVIM 250 B | 2.50 mm² | 100 m

NEW



BLACK

Ref. SPVIM 150 N | 1.50 mm² | 200 m

Ref. SPVIM 200 N | 2.00 mm² | 100 m

Ref. SPVIM 250 N | 2.50 mm² | 100 m

SPI - VIM

NEW

SPEAKER CABLE COPPER CA PULL BOX - Available on march

SPI VIM speaker cable range is a high performance and exceptional quality installation speaker cables. They are designed to deliver excellent levels of performance in all multi-room and home cinema installations.

Very practical, a single cable includes 2 or 4 conductors, in order to facilitate its implementation and installation.

PULL BOX - WHITE CABLES

Ref. SPI VIM 215B | 2x1.5 mm² | 305 m

Ref. SPI VIM 415B | 4x1.5 mm² | 153 m

Ref. SPI VIM 220B | 2x2.0 mm² | 153 m

Ref. SPI VIM 420B | 4x2.0 mm² | 153 m



Pictures may differ from actual products

Ref. SPI VIM 225B | 2x2.5 mm² | 153 m

Ref. SPI VIM 425B | 4x2.5 mm² | 153 m

SPI - VIM OFC

NEW

SPEAKER CABLE COPPER OFC PULL BOX- ON STOCK

SPI VIM 220 OR is high performance and exceptional quality installation OFC speaker cables with a water and UV resistant PE outer sheath.

They are designed to deliver excellent levels of performance in most outdoor installations with no additional conduit required.

Very practical, a single cable includes 2 conductors, in order to facilitate its implementation and installation.

PULL BOX - ORANGE CABLES

Ref. SPI VIM 220 OR | 2.20 mm² | 305 m - 500 ft



Pictures may differ from actual products

CAT

High quality speaker cable



99.99% oxygen free copper (OFC) conductors, fine strands, single braiding, many available sections, easy identification (two-tone cable).

Excellent value for money.

**LC**

High quality speaker cable



99.99% oxygen free copper (OFC) conductors, fine strands, braiding in 7 groups, several available sections, low capacitive effect due to the spacing between both conductors.

Very good definition in the trebles.



Ref. CAT075020 | 0.75 mm² | 500 m | 10 m | 15 m

Ref. CAT100020 | 1.00 mm² | 400 m | 30 m

Ref. CAT150020 | 1.50 mm² | 300 m | 30 m | 10 m | 15 m

Ref. CAT200015 | 2.00 mm² | 200 m

Ref. CAT250015 | 2.50 mm² | 100 m | 10 m

Ref. LC150012 | 1.50 mm² | 100 m

Ref. LC250012 | 2.50 mm² | 100 m

PRO10

Very High quality speaker cable



TRANSPARENT



BLACK



WHITE

99.99% oxygen free copper (OFC) conductors, very fine strands, braiding in 7 groups, many available sections, very flexible transparent sheathing.

Very balanced and defined sound.

Ref. P160T | 1.60 mm² | 200 m | 30 m

Ref. P200T | 2.00 mm² | 200 m

Ref. P264T | 2.64 mm² | 150 m

Ref. P330T | 3.30 mm² | 100 m

Ref. P330T | 3.30 mm² | 100 m

Ref. P200N | 2.00 mm² | 200 m

Ref. P160B | 1.60 mm² | 200 m

Ref. P200B | 2.00 mm² | 200 m

Ref. P330B | 3.30 mm² | 100 m

FLAT LINE

Very High quality speaker cable



TRANSPARENT



WHITE

99.99% oxygen free copper (OFC) conductors, very fine strands, true flat braiding, several available sections, very flexible transparent sheathing.

Very balanced and defined sound, with an improved sound stage.

Ref. FL250T | 2.50 mm² | 150 m

Ref. FL400T | 4.00 mm² | 50 m

Ref. FL250F | 2.50 mm² | 150 m

Ref. FL400F | 4.00 mm² | 50 m

CBV

High quality speaker cable



99.99% oxygen free copper (OFC) conductors, very fine strands, HSCC (High Spec Copper Conductor) braiding, progressive double insulation (PP insulation gradient), several available sections, flexible white sheathing. Locating by sheathing's shape. Available in assembled version with multi contacts banana plugs.

Very dynamic and fluid sound, with a very homogeneous sound image and above all a more precise bass thanks to HSCC.

Ref. CBV 130016/2M | 1.30 mm² | 2X2M

Ref. CBV 130016/3M | 1.30 mm² | 2X3M

Ref. CBV 130016/5M | 1.30 mm² | 2X5M

Ref. CBV 130016/60M SPOOL | 1.30 mm² | 60 M

**TDC**

Very High quality speaker cable



99.99% oxygen free copper (OFC) conductors, strands in 2 different sections (TDC), braiding in 7 groups (1 multi strand group for the bass and 6 groups of small strands for the midrange-treble), low capacitive effect due to the spacing between both conductors, many available sections, smoked sheathing.

The plans are perfectly spaced and the lateral opening impressive. The bass is very deep and dynamic, the treble perfectly defined.

Ref. TDC200F | 2.00 mm² | 100 m Ref. TDC300F | 3.00 mm² | 100m Ref. TDC500F | 5.00 mm² 50m

Ref. ELITE 300 | 3.00 mm² | 2 x 2 m | 2 x 3 m | 2 x 5 m

Ref. ELITE 500 | 5.00 mm² | 2 x 2 m | 2 x 3 m | 2 x 5 m

**BM**

Very High quality speaker cable



99.99% oxygen free copper (OFC) and silver (SPC) conductors, strands in 2 different sections (TDC), braiding in 7 groups (1 multi strand group for the bass, 4 groups of small strands for the midrange and 2 groups of small silver strands for the treble), low capacitive effect due to the spacing between both conductors, many available sections, transparent sheathing.

The plans are perfectly spaced and the lateral opening impressive. The bass is very deep and dynamic. Thanks to the silver, the

Ref. BM150T | 1.50 mm² | 100 m Ref. BM250T | 2.50 mm² | 100m Ref. BM400T | 4.00 mm² 50m

Ref. BM600T | 6.00 mm² | 150 m

Ref. PRESTIGE 300 | 3.00 mm² | 2 x 2 m | 2 x 3 m | 2 x 5 m

Ref. PRESTIGE 500 | 5.00 mm² | 2 x 2 m | 2 x 3 m | 2 x 5 m



ITEM

ETHERNET



UTP600 / UTP600 LSZH

NEW

VERY HIGH QUALITY ETHERNET CABLE - ON STOCK

99.99% oxygen free copper (OFC) conductors, simple shielding, round cable, stranded wires (for RJ45 plugs crimping), category 6, UTP configuration, 24 AWG.

Conductors designed to provide a bitrate of 1000 Mbits/s (Gigabits). UTP configuration for better picture and sound quality. Perfect for hand made Ethernet connection.

UTP600 LSZH :

Has the same specs as the UTP600 with the added bonus of a LSZH fire rated outer sheath

Ref. UTP 600 | 305 m (White cable)

Ref. UTP 600 LSZH | 305 m (Purple cable)



Pictures may differ from actual products



E-NET 600

HIGH QUALITY ETHERNET CABLE

99.99% oxygen free copper (OFC) conductors, simple shielding, ultra-flat cable, compact molded jacks, gold contacts, 1 RJ45 plug / 1 RJ45 plug, category 6, UTP configuration.

Shielded jacks for perfect insulation of data against external interference. Conductors designed to provide a bitrate of 1000 Mbits/s (Gigabits). UTP configuration for better picture and sound quality. Tangle-free flat cable. It ensures high quality Ethernet connection and makes life easy.

(H)6 x(L) 2 mm

Ref. E-NET600 | 1.00 m | 3.00 m | 5.00 m | 10.00 m | 15.00 m



RJ45-8P-B

CRIMPING RJ45 PLUG



RJ45 8 Pins shielding for CAT6 cable

Ref. RJ45-8P-G | 10 pieces

RJ45-8P-B

CRIMPING TOOL



It's an essential tool, especially designed to compress the Ethernet cable to the connector.

Ref. RJ45-TOOL

CAT8 CABLE

NEW

ETHERNET CABLE

Our preassembled CAT8 cable offers incredibly fast data transmission speed and superior performance. With a bandwidth of up to 2000Mhz, this cable is ideal for demanding applications such as 4K streaming, online gaming, and transferring large files.

Ref. CAT 8 | 1 m | 2 m | 3 m | 5 m

Pictures coming

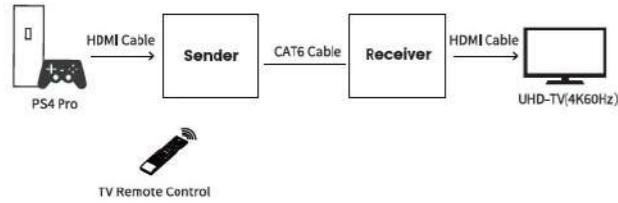
PRO K2

NEW

HDMI EXTENDER FOR ETHERNET CABLE - AVAILABLE ON MARCH

Features

- Support high resolution up to 4K@60Hz YUV 4:4:4
 - Support HDCP 2.2 and HDCP 1.4
 - Support High Dynamic Range (HDR) video
 - Support EDID and HDCP bypass
 - Support highest data transfer rate up to 6.0Gbps per channel (18Gbps all channels)
 - TMDS clock can be up to 600MHz
 - Support 12bit per channel (36bit all channels) deep color
 - Support uncompressed audio such as LPCM
 - Support compressed audio such as DTS, Dolby Digital
 - Supports single ended power supply feature, 12V power transmitted from sender to receiver
- Note: the product only supports the HDR10 and HLG High Dynamic Range (HDR) signal, and don't support the Dolby Vision High Dynamic Range (HDR) signal



HDMI™ Extender Supports 70m at 4K@60Hz
with Single Ended Power and Bi-directional IR

Input x 1, Output x 1



Ref. PRO K2

UNIVERS

HIGH FIDELITY USB CABLE

99.99% oxygen free copper and silver (SPC) conductors, strong section cable, double shielding, metallic plugs, gold contacts, several available lengths, 1 USB A plug / 1 USB B plug.

An anti-vibration nylon braid, a braiding of high-density shielding, an aluminum strip and metallic plugs ensure foolproof insulation against interference. Conductors designed to provide a bitrate of 480 Mbits/s and USB 2.0 compliance (power conductors are separate from data conductors). Everything is brought together to offer a high quality USB connection and release all the details and fineness of the music, not to mention the precision and the colors of high definition videos.

Ref. UNIVERS | 1.00 m | 2.00 m

ZOOM



ITEM

AUDIO

Real Cable PRO

E-SUB-2

VERY HIGH QUALITY SUBWOOFER

99.99% oxygen free copper (OFC) conductors, strong section cable, double shielding, metallic plugs, gold contacts, hand soldered, many available lengths, 1 male RCA plug / 1 male RCA plug.

Rich and defined bass.
Ø 7 mm

Ref. E-SUB - 2 | 2.00 m | 3.00 m | 5.00 m | 7.50 m | 10.00 m



NANO-SUB

CABLE AUDIO SUBWOOFER

99.99% oxygen free copper (OFC) conductors, strong section cable, double shielding, metallic plugs, gold contacts, hand soldered, many available lengths, 1 male RCA plug / 1 male RCA plug.

Rich and defined bass.
Ø 2.25 mm

Ref. NANO-SUB | 2.00 m | 3.00 m | 5.00 m | 7.50 m | 10.00 m



ECA-2

VERY HIGH QUALITY AUDIO STEREO CABLE

99.99% oxygen free copper (OFC) conductors, strong section cable, double shielding, metallic plugs, gold contacts, many available lengths, 2 male RCA plugs / 2 male RCA plugs.

Very balanced and defined sound.
Ø 7 mm

Ref. ECA - 2 | 1.00 m | 2.00 m



XLR 128-2

VERY HIGH QUALITY SYMMETRIC AUDIO STEREO CABLE

99.99% oxygen free copper (OFC) conductors, strong section cable, double shielding, metallic plugs with ClickLock®, gold contacts, many available lengths, 2 male XLR plugs / 2 female XLR plugs.

Very balanced and defined sound. ClickLock® plugs ensure a reliable and durable connection.

Ø 8 mm

Ref. XLR128-2 | 1.00 m | 2.00 m



EAN-2

VERY HIGH QUALITY DIGITAL AUDIO CABLES

99.99% oxygen free copper (OFC) conductors, 75 ohms adjusted, strong section cable, double shielding, metallic plugs, gold contacts, several available lengths, 1 male RCA plug / 1 male RCA plug.

Very balanced and defined sound.

Ø 7 mm

Ref. EAN-2 | 1.00 m | 2.00 m



Pictures may differ from actual products



CNUG2

LOSSLESS DIGITAL CONVERTER

Recommended to convert optical/coaxial digital audio to coaxial/optical digital audio.

- > Inputs : 1 optical (TosLink), 1 coaxial (SPDIF)
- > Outputs : 1 optical (TosLink), 1 coaxial (SPDIF)
- > External DC power supply (no electric interference)
- > Audio compatibility : PCM 2.0, Dolby® Digital EX and DTS™ES



Ref. CNUG2

CAN-1

Analog / Digital AUDIO CONVERTER

The Real Cable® CAN-1 audio converter allows to convert an analog stereo audio signal to coaxial and / or Toslink stereo digital output signals.

The Real Cable® CAN-1 audio converter allows to convert an analog stereo audio signal to coaxial and / or

Toslink stereo digital output signals.

Perfect for many uses, it allows to connect a vinyl turntable or any other analog source to a Devialet®

Phantom® for example.

It also offers the possibility to work as an audio diffuser using the Coaxial and Optical outputs simultaneously.

This converter is compact and can be located in different places, without any space constraints, offering an

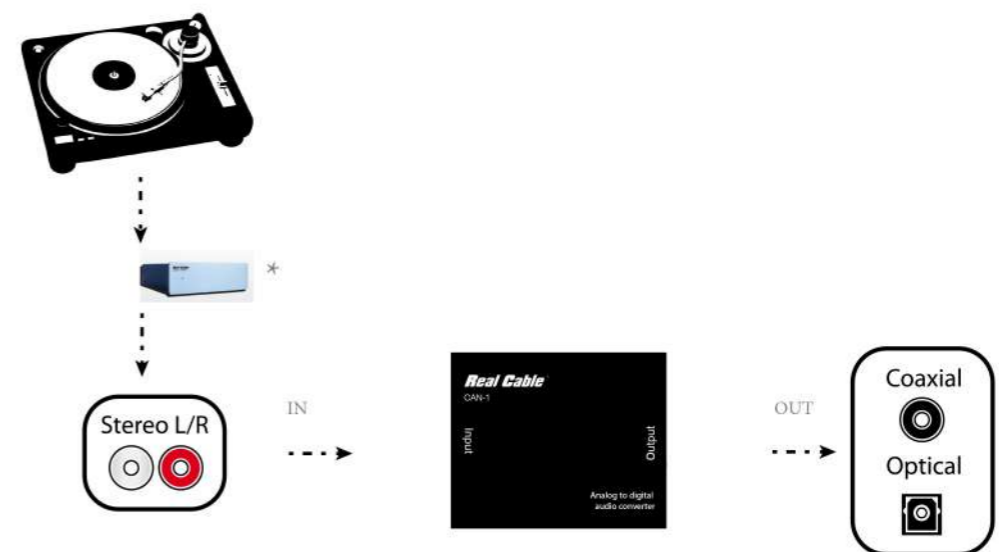
audio signal up to 5 meters with no loss of quality.

This Real Cable Converter is Plug-and-play

- > Output : 1x Digital optical (TosLink) + 1x Coaxial (SPDIF) in parallel
- > Input : 1 x analog RCA left and right
- > Power : 5 V power supply
- > Sampling Frequency : 48 kHz

Ref. CAN-1

You can add an analog input to the devices which only have digital input.



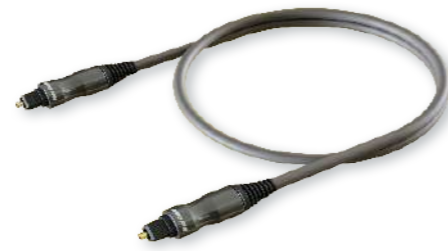
OTT 70

VERY HIGH QUALITY OPTICAL AUDIO CABLE

PMMA conductor (polymethylmethacrylate), strong section cable, metallic plugs, triple protection, many available lengths, 1 male TosLink plug / 1 male TosLink plug.

Very balanced and defined sound.

Ø 6 mm



Ref. OTT70 | 0.80 m | 1.20 m | 2.00 m | 3.00 m | 5.00 m | 10.00 m

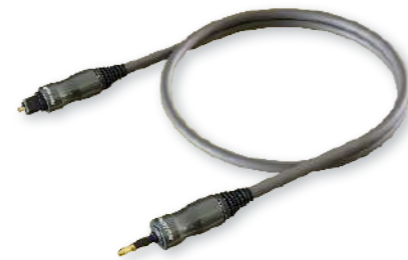
OJT70

OPTICAL AUDIO CABLE TOSLINK M/MINI TOSLINK M

High quality cable recommended for digital optical audio connections between an amplifier, home theater pre-amplifier or digital converter.

Made with high quality optical fiber with a large section protected by a conductive PMMA (PolyMethyle MethAcrylate).

Ø 6 mm



Ref. OJT70 | 0.80 m | 1.20 m | 2.00 m

NANO-DAC

AUDIO DIGITAL TO ANALOG CONVERTER

Recommended to convert optical and coaxial digital audio to analog audio stereo L/R. Perfect for devices without analog audio output (Apple TV, Playstation 3, DVD player, etc.) and for amplifier without digital input. The NANO-DAC allows to listen your TV with a headphone if there is an optical output and not one for headphone.

- > Inputs : 1 optical (TosLink), 1 coaxial (SPDIF)
- > Outputs : 1 analog RCA L/R



Ref. NANO DAC

HD2 A113 -4K

HD CONVERTER - ON STOCK

NEW

HD2-A113 is a solution for users who use HDMI® product and like to output audio to an audio system to enjoy High quality sound.

Also, some people have trouble to enjoy 4K and high quality audio at the same time with their Home Theater System.

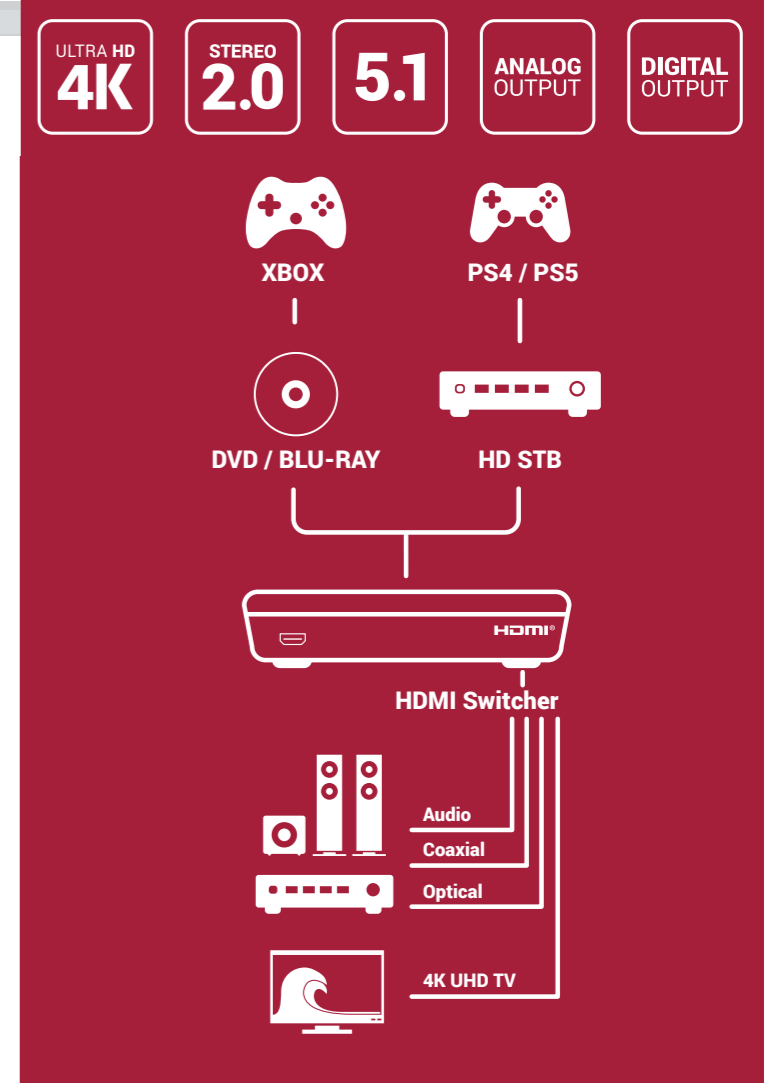
With HD2-A113 the problem can be solved. Separating audio from HDMI to digital audio output (Optical, Coaxial), so users will not have problem to watch 4K videos while connecting non-4K amplifier and 4K TV.



Ref. HD2 A113 - 4K

Technical Specifications

- > HDMI® 2.0 video format supported
 - > Support 4K HDTV
 - > Support Pixel clock rate up to 600 MHz
 - > HDCP 2.2 compliant
 - > Support digital S/PDIF audio output (optical, coaxial)
 - > Support analog audio output (R/L)
 - > DTS® HD, Dolby® TrueHD lossless compressed digital audio compliant (via HDMI)
 - > Gold plated connectors
- Two modes selection for audio format setting



ITEM

NOMAD

Real Cable PRO

USB-TYPE C

NEW

FAST CHARGING CABLE - AVAILABLE ON MARCH

This USB type C Cable supports fast charging technology, which means you can recharge your devices quickly and efficiently, saving you valuable waiting time.

Ref. USB-C | 1.00 m | 2.00 m |



iPLUG J35M

HIGH QUALITY AUDIO STEREO CABLE

99.99% oxygen free copper (OFC) conductors, anti-twist flat cable, retaining clip, metallic plugs, gold contacts, 1 male JACK 3.5 plug / 1 male JACK 3.5 plug.

Ideal for connecting a computer, an MP3 player, a smartphone, an iPod, an iPhone, a Hi-Fi system or Home Theater.

(H) 4 x (L) 2.6 mm

Ref. IPLUG-J35M | 1.50 m



iPLUG J35MF

HIGH QUALITY AUDIO STEREO EXTENSION

99.99% oxygen free copper (OFC) conductors, anti-twist flat cable, retaining clip, metallic plugs, gold contacts, 1 male JACK 3.5 plug / 1 female JACK 3.5 plug.

Ideal for extending the connection of a stereo headphone.

(H) 4 x (L) 2.6 mm

Ref. IPLUG-J35MF | 1.50 m | 3.00 m



iPLUG J35M2F

HIGH QUALITY AUDIO STEREO SPLITTER

99.99% oxygen free copper (OFC) conductors, anti-twist flat cable, retaining clip, metallic plugs, gold contacts, 1 male JACK 3.5 plug / 2 female JACK 3.5 plugs.

Ideal for splitting the audio output of a computer, an MP3 player, a smartphone, an iPod, an iPhone, an iPad, etc.. for listening for two.

(H) 4 x (L) 2.6 mm

Ref. iPLUG-J35M2F | 0.20 m



iPLUG J35M2M

HIGH QUALITY AUDIO STEREO CABLE

99.99% oxygen free copper (OFC) conductors, anti-twist flat cable, retaining clip, metallic plugs, gold contacts, 1 male JACK 3.5 plug / 2 male RCA plugs.

Ideal for connecting a computer, an MP3 player, a smartphone, an iPod, an iPhone, a Hi-Fi system or Home Theater.

(H) 4 x (L) 2.6 mm

Ref. iPLUG-J35M2M | 1.50 m | 3.00 m



NANO-LP1

STAGE PREAMPLIFIER

This NANO-LP1 stereo phono stage for turntables allows connecting a turntable to audio equipment without phono input.

It deploys RIAA equalization circuitry that can recover the original sound from a phonographic disk. Delivery with an adapter AC 220V, but it is advised to use a 9V battery to avoid electrical disturbance generated by the sector.

Technical specifications

- > Power supply : 9 V DC battery or adapter 220 V AC / 9 VDC
- > Current consumption : 1 ? mA (average)
- > Input impedance : 50 K Ohms
- > Output impedance : 50 K Ohms
- > Amplification : 34 dB
- > Frequency range : 30 Hz – 20 KHz
- > Compensation : RIAA correction
- > Real Cable Moniteur 2RCA-1/ 1m supplied

Ref. NANO-LP1



MINI-LP50

PHONE PREAMPLIFIER MM/MC

This new Real Cable® phono preamplifier lets you connect your turntable directly to your amplifier when it is devoid of phono input.

REAL CABLE's engineers have been working on the quality of internal components for this phono preamp. They stimulated a separate power supply, which allows complete isolation. This power gives us an excellent signal / noise.

«We have found appropriate to avoid the use of a linear power supply, a solution with a DC/DC converter inside Mini-LP50.»

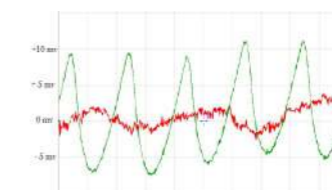
«The DC/DC converter used in our high frequency preamplifier works (up to above 20 KHz), which allows to have a complete cancellation regarding the filter residue at 50 Hz and 100 Hz. It shows a quality listening devoid of any internal noise. The graph below demonstrates the importance of the power inside Mini LP50 compared with others competing brands that do not use this technology.»

«The RC filters (resistor / capacitor) were added in the input stages inside Mini LP50. We used 4 filters coupled in pairs on each channel to prevent noise overlay the signal.»

The results both in signal noise and distortion rate harmonic, are simply amazing. The Real Cable Mini LP50 becomes the unique reference for preamplifier.»

Technical specifications

- > Supply power : Adaptor 220 V AC/DC 12 V
- > Current consumption : 100 mA (average)
- > Input Impedance 47 K Ohms MM / 100-Ohms MC
- > Output Impedance 50K Ohms
- > Amplification 34 dB MM / 60 dB MC
- > Frequency Range 30 Hz - 20 KHz
- > Correction RIAA
- > SB Rapport 80 dB MM / 75 dB MC



Competitors interference Real Cable



Dimensions (L x l x P) : 160 x 140 x 46 mm



Ref. MINI-LP50

iPLUG BTX

BLUETOOTH TRANSMITTER ANALOG JACK 3.5mm

Ideal for example for coupling a TV screen to a Bluetooth headphone. Connected up to 2 devices (headphone or music receiver).

Its A2DP compatibility assures a perfect universality and the aptX, an excellent audio quality (16 bits/44,1 kHz transmission).

> Real Cable Moniteur JRCA-1/ 1m50 supplied



Ref. iPLUG-BTX

iPLUG BTX HD

BLUETOOTH TRANSMITTER DIGITAL OPTICAL

Ideal for example for coupling a TV screen to a Bluetooth headphone. Connected up to 2 devices (headphone or music receiver).

Its A2DP compatibility assures a perfect universality and the aptX, an excellent audio quality (16 bits/44,1 kHz transmission).

> Real Cable Moniteur OPT-1/ 0m75 supplied



Ref. iPLUG-BTX HD

iPLUG BTR HD

BLUETOOTH aptX HD

When connected to an Hi-Fi or Home Theater amplifier, the Bluetooth receiver allows the wireless spreading of the music stocked in mobile devices, such as laptop, tablet or smartphones.

Its A2DP compatibility assures a perfect universality and the aptX, an excellent audio quality (24 bits/48 kHz transmission).

Technical specifications

- > Bluetooth V 5 : Profil AD2P, NFCW
- > Codecs : aptX and SBC
- > Devices memorized : up to 8 max.
- > Analog output : stereo (Jack 3.5 mm)
- > Digital output : optical (Toslink)
- > Bandwidth : 20 - 20 000 Hz +/- 3 dB
- > Channel separation : 45 dB
- > Signal/noise ratio : 104 dB
- > Distorsion : 0,05 %
- > Range : 20m in free field
- > Power supply : external (5 V - 0,6 A)
- > Real Cable Moniteur JACK-1/ 1m50 supplied



Ref. iPLUG-BTR HD

ITEM

ACCESSORIES



RC14IT & RC06IR INFRARED EXTENDER & EXTENSION BOX



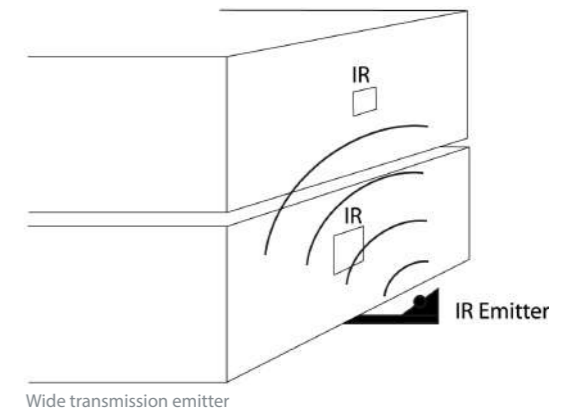
Ref. RC14IR | Infrared Extender
Ref. RC06IR | Extension box (6 additional devices ir multiroom)

- > Control 4 devices, and more (up to 8) thanks to the wide diffusion emitter design.
- > Frequency range from 20kHz to 60kHz. Supports all devices on the market, except B&O.
- > One receiver for horizontal position, with wide angle IR reception. Up to 8 m in +/- 45° angle.
- > Possibility to add 6 more devices by using extension box RC06IR (optional). This extension box doesn't need any power supply and is connected to the RC14IR through a CAT5 Ethernet cable up to 250 m maximum length. Perfect for multiroom uses.

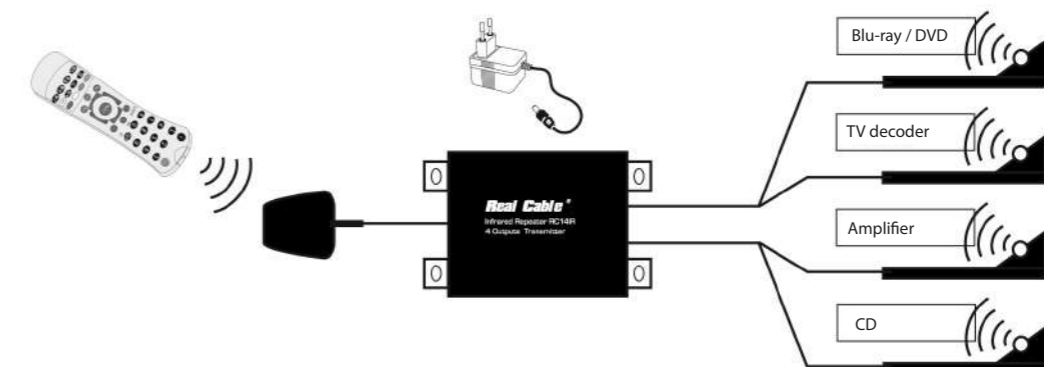
Main unit RC14IR
1 x 5 V DC power socket
2 x Jack for IR emitters
1 x Jack for IR receiver
1 x RJ45 for RC06IR extension box (optional)
Dimensions : 62 (W) x 50 (D) x 23 (H) mm
Weight : 78 g
Mounting size : 70.5 x 32 mm

IR Receiver
Reception range : 8 m
Reception angle : +/- 45°
Cable's length : 2 m
Dimensions : 31 (W) x 31 (D) x 14 (H) mm

IR Emitter
Transmission range : +/- 50 cm
Transmission angle : 90°
Cable's length : 2 m



Installation example



B6035AS

SPEAKER CABLE TERMINALS

Model to solder. Support up to 5 mm² speaker cables. Multi gold contacts.
Perfect for speaker cables from CAT, LC, PRO10 & CBV range.



Ref. B6035AS | set of 2 red terminals + 2 black terminals

B6020-2C/4PCS

BANANA TERMINALS / NEW VERSION

NEW

Model to screw (doesn't need a soldering iron). Support up to 6 mm² speaker cables. Multi gold contacts.
Perfect for speaker cables from CAT, LC, PRO10 & CBV range.



Ref. B6020 | Set of 2 red terminals + 2 black terminals

Ref. B6020 R | Red set of 50 pcs

Ref. B6020 B | Black of 50 pcs

BFA6020-2C/4PCS

BFA TERMINALS

Model to screw (doesn't need a soldering iron). Support up to 7 mm² speaker cables. Gold contacts.
Perfect for speaker cables from CAT, LC, PRO10, CBV, TDC, BM, BWOFC & TDCOCC range.



Ref. BFA 6020 | Set of 2 red terminals + 2 black terminals

Ref. BFA 6020 R | Red set of 50 pcs

Ref. BFA 6020 B | Black of 50 pcs

B6932-2C/4PCS

BANANA TERMINALS

Model with locking ring to screw (doesn't need a soldering iron). Support up to 10 mm² speaker cables. Multi gold contacts. Ready for bi-wiring (stackable terminals).
Perfect for speaker cables from FL, TDC, BM & TDCOCC range.



Ref. B6932 | set of 2 red terminals + 2 black terminals

B7210

BANANA TERMINALS

Model to screw (doesn't need a soldering iron) or to solder. Support up to 8 mm² speaker cables. Multi gold contacts.
Perfect for speaker cables from BWOFC & TDCOCC range.



Ref. B7210 | set of 2 red terminals + 2 black terminals

BF7205

SPEAKER CABLE TERMINAL

Model to screw or solder. Support up to 8 mm² speaker cables. Universal model (one body, two possibilities : fork or banana terminals). Gold contacts.
For a perfect finish while making HD-TDC made to measure cables. Also suitable for TDC and BM speaker cables.



Ref. BF7205 | Set of 4 plugs + 4 fork terminals + 4 banana terminals

B6159

BANANA TERMINALS

Model to screw (doesn't need a soldering iron). Secure Lock plug : protection of the retractable contact. Support up to 8 mm² speaker cables. Gold contacts.



Ref. B6159 | Set of 2 red terminals + 2 black terminals

XLR

BANANA TERMINALS

Monoblock model to solder. Support up to 14 mm outer diameter cables. Gold contacts. Metal body for a perfect shielding. ClicLock® plug.

Ref. XLR6403MR | male (red) | 1 piece

Ref. XLR6403MB | male (white) | 1 piece

Ref. XLR6404FR | female (red) | 1 piece

Ref. XLR6404FB | female (white) | 1 piece



Monoblock model to solder. Support up to 12 mm outer diameter cables. Gold contacts. Metal body for a perfect shielding. ClicLock® plug.

Ref. Ref. XLR6612MR | male (red) | 1 piece

Ref. Ref. XLR6612MB | male (white) | 1 piece

Ref. Ref. XLR6612FR | female (red) | 1 piece

Ref. Ref. XLR6612FB | female (white) | 1 piece





One product for one function

The new range of Moniteur by Real Cable is the entry level with a concept of simplicity without sacrificing quality, while being offered prices never seen before for a Real Cable's product. No need to think about the cable's quality when selecting, the products Monitor by Real Cable are life time warranty and are using one of the best qualities of copper (OFC) conductors. Moniteur by Real Cable's products make the difference playing on sobriety in the design of products, in packaging, in the range and also in the references. Choose a product Monitor by Real Cable, is to offer a good, quality, reliability product at the best price.

HDMI-1 HDMI cable



HDMI cable with gold contact plugs. Perfect for DVD players, Blu-ray players, game consoles and HTDV decoders connection to flat TVs, videoprojectors or Home Cinema amplifiers.

Ref. HDMI-1 | 1.00 m | 1.50 m | 2.00 m | 3.00 m | 5.00 m



TV-2 Universal Antenna cable



Antenna cable with gold contact plugs. Perfect for televisions, HDTV decoders, TV recorders connection to antenna wall plates. Male/female universal cable with male/male adapter included.

Ref. TV-2 | 1.50 m | 3.00 m | 5.00 m



OPT-1 Optical cable



Optical cable with gold contact plugs. Perfect for DVD players, Blu-ray players, game consoles and HTDV decoders connection to Home Cinema systems or amplifiers.

Ref. OPT-1 | 0.75 m | 1.50 m | 3.00 m | 5.00 m | 10.00 m



2RCA-1 Stereo cable



HI-FI AMPLIFIER

Audio stereo cable with RCA gold contact plugs. Perfect for CD players, tuners or other stereo devices connection to Hi-Fi systems or amplifiers.

Ref. 2RCA-1 | 0.50 m | 1.00 m | 2.00 m | 3.00 m | 5.00 m



SUB-1

Subwoofer cable



AV RECEIVER

Audio cable with RCA gold contact plugs. Perfect for subwoofers connection to Home Cinema systems or amplifiers.

Ref. SUB-1 | 1.00 m | 2.00 m | 3.00 m | 5.00 m | 7.50 m | 10.00 m



YRCA-1

Audio Splitter cable



AV RECEIVER SUBWOOFER

Audio splitter cable with gold contact plugs. Perfect for mono audio signal input into stereo devices. Particularly recommended for subwoofers with stereo input.

Ref. YRCA-1 | 0.20 m



JACK-1

Stereo Jack cable



HI-FI AMPLIFIER IPOD / IPHONE / MP3 PC / MAC CAR AUDIO MOBILE SPEAKER

Audio stereo cable with Jack gold contact plugs. Perfect for MP3 players or other portable devices connection to Hi-Fi systems or amplifiers.

Ref. JACK-1 | 1.50 m



JRCA-1

Stereo Jack cable



HI-FI AMPLIFIER IPOD / IPHONE / MP3 PC / MAC CAR AUDIO MOBILE SPEAKER

Audio stereo cable with Jack gold contact plugs. Perfect for MP3 players or other portable devices connection to Hi-Fi systems or amplifiers.

Ref. JRCA-1 | 1.50 m



cables

YJ35-1

Stereo audio splitter with 1 male jack and 2 females plugs



HI-FI AMPLIFIER

Perfect for splitting the output from a computer, MP3, iPod, iPhone, iPad, etc. to share the sound with 2 headphones.

The deoxygenated OFC copper strands and the aluminium double shielding make a reliable protection against interferences.

Ref. YJ35-1 | 0.20 m



LIGHT-1

USB cable with USB A plug and lightning plug

Made for

iPod iPhone iPad

Ideal for synchronizing and charge iPhone, iPod, iPad with a computer.

It allows to sync files on a computer with a fast transfer.

The OFC/aluminium double shielding assures a reliable protection.

Ref. LIGHT-1 | 1.00 m



OTG-1

USB cable with USB OTG plug and micro plug

Perfect to connect an Android smartphone and transfer data with OTG (On The Go) protocol on USB key or hard drive USB plug.

It allows to sync files on a Android smartphone with a fast transfer. The OFC/aluminium double shielding assures a reliable protection.

Ref. OTG-1 | 0.15 m



Real Cable/PRO[®]

real-cable.com



Distributor

Pictures are not contractual. Due to continuous improvement, specifications are subject to change without notice. All brand names mentioned are registered Trademarks of their respective owners.

- FRANCE MAJOR DIFFUSION - REAL CABLE -
ZA LA GEODE 20 RUE DES 4 VENTS - 91690 GUILLERVAL - FRANCE - TEL +33.1.60.80.95.77 - export@real-cable.com